

Continuous Level Transducer



*Model C3946 with
Buna-N Float*



*Model C3946 with
Polypropylene
Float*



*Model C3957 with
Stainless Steel Float*

Madison's continuous level transducers are designed for vertical mounting in a tank. Reed switches are evenly spaced over the operation range to achieve the desired resolution. A single magnet-containing float travels the length of the sensing range. The reed switches are magnetically actuated as the float moves with the liquid level. DC power is applied to the switch, and the output signal can then be routed to programmable controllers, microprocessors or other readout devices.

Model C3946 is a 10mm resolution continuous level float switch with a stainless steel or brass stem and available with either a polypropylene, Buna-N or stainless steel float.

Model C3957 is a 5mm resolution continuous level float switch with a stainless steel or brass stem and is available with either a stainless steel, polypropylene or Buna-N float.

Both models are suitable for petroleum-based liquid applications, in addition to many other liquids with low- to mid-range viscosity.

Features

- Flexibility for varied fluid environments
- Suitable for any tank application
- Provides precise, uninterrupted readout with 5mm or 10mm resolution
- Various output signals available (4-20 mA, 1-5 DC, resistive, etc.)
- Ideal for:
 - Remote sensing in tanks with restricted or limited access
 - Precise liquid level monitoring in a series of tanks in mixing operations
 - Central monitoring of liquid level in remote multiple tanks
 - Any tank application where the exact liquid level has to be known at any time

Specifications

Resolution – 5 or 10mm

Signal Output – 1/10 Watt resistive, 100 ohms per 5mm
 3-wire: 10-30 VDC, 1-5 V output
 2-wire: 10-30 VDC, 4-20 mA output

Wiring Details – 2-wire: Red - positive
 Black - negative
 3-wire: Red - positive
 Black - negative
 White - signal out

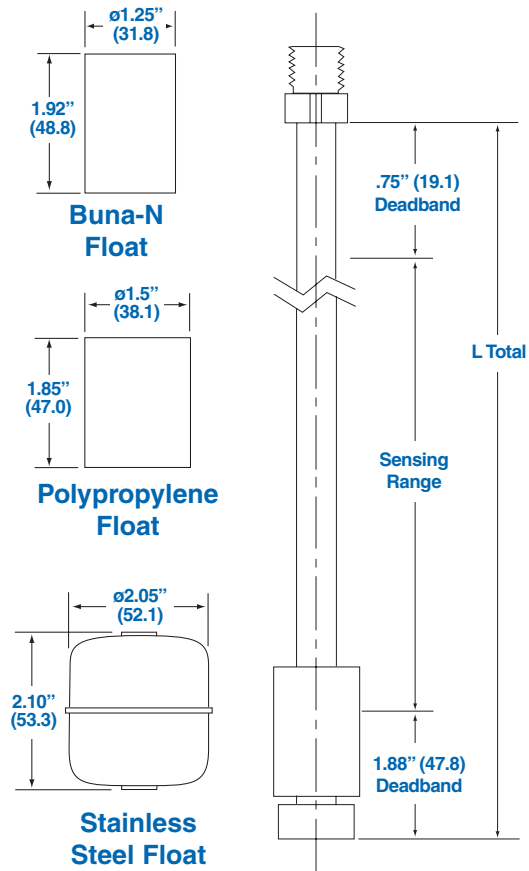
Switch

Materials – 316 SS *or* brass stem *and*
 Buna-N float (float dia. 1.25") *or*
 Stainless float (float dia. 2.05") *or*
 Polypropylene float (FDA approved) (float dia. 1.5")
Note: all stem diameters are 0.5" OD

Sensing Length – 6" to 96"
 Standard lengths: 16", 24", 32", 36", 42", 48"
 Note: overall switch length will be longer,
 to allow float travel over the sensing range

Operating Temp. – -40°C to 105°C (-40°F to 221°F),
 Resistive output
 – -40°C to 85°C (-40°F to 185°F),
 4-20 mA, 1-5 V output

Approval – All models carry CE approval. Model C3975
 is also ABS approved. Other approvals are
 available, please consult factory.

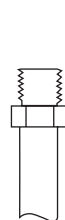


Options

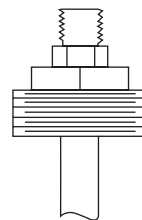
Fitting Options:

Representative samples at right

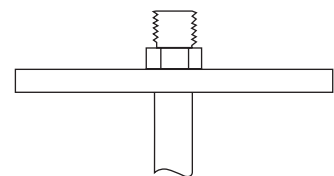
- 1/2", 3/4", 1" or 1-1/2" NPT inside mount
- 1-1/2" or 2" NPT outside mount*
- 2", 3" or 4" ANSI flange
- Other mounting options available



Inside Mount



Outside Mount



ANSI Flange

- **Temperature Sensing**

- **High/Low Set Point Alarms**

*1-1/2" NPT outside mount not available with stainless float

All specifications are subject to change without notice.



Sensor solutions for today and the future™



Madison Company 800-466-5383 www.madisonco.com

27 Business Park Drive, Branford, CT 06405 • 203-488-4477 • Fax: 203-481-5036 • E-mail: info@madisonco.com

Madison Europe – Phone: + 31 (0) 548 659 034 • Fax: + 31 (0) 548 659 010 • E-mail: madison@eurodev.com